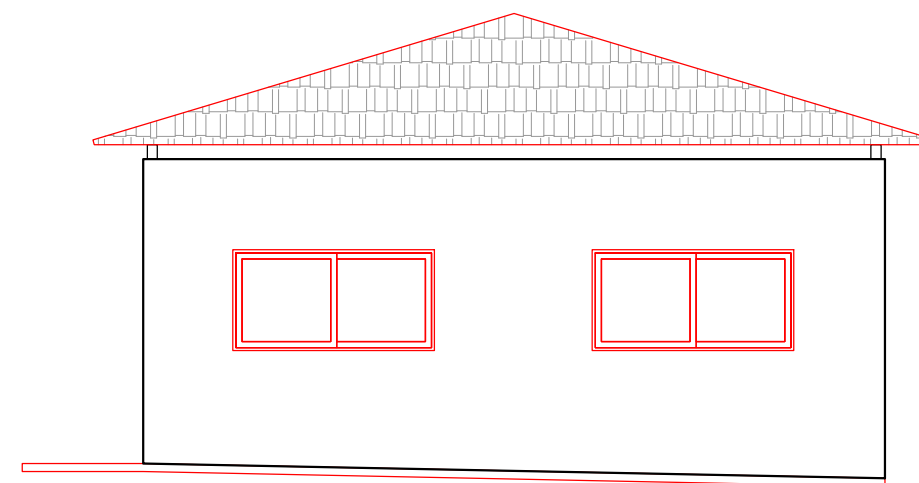


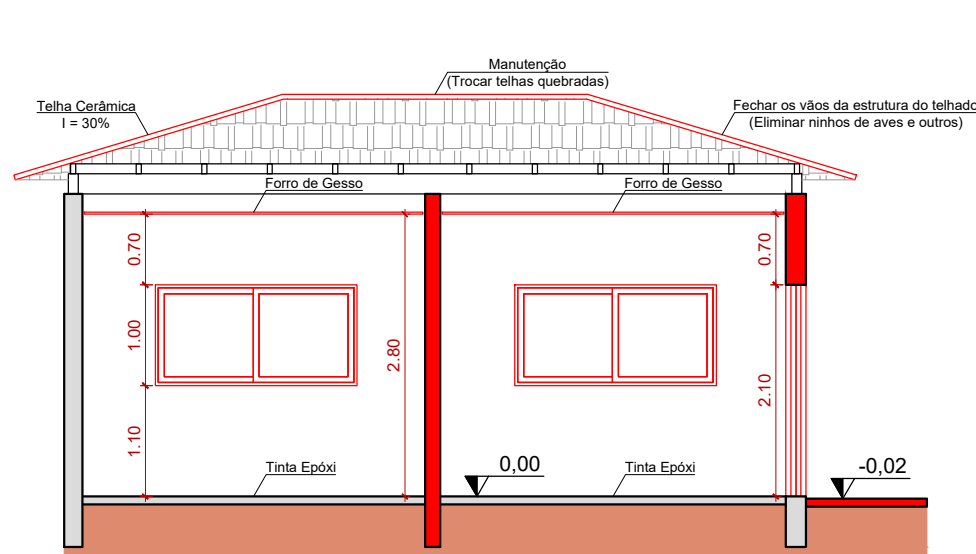
VISTA FRONTAL

Escala 1:75



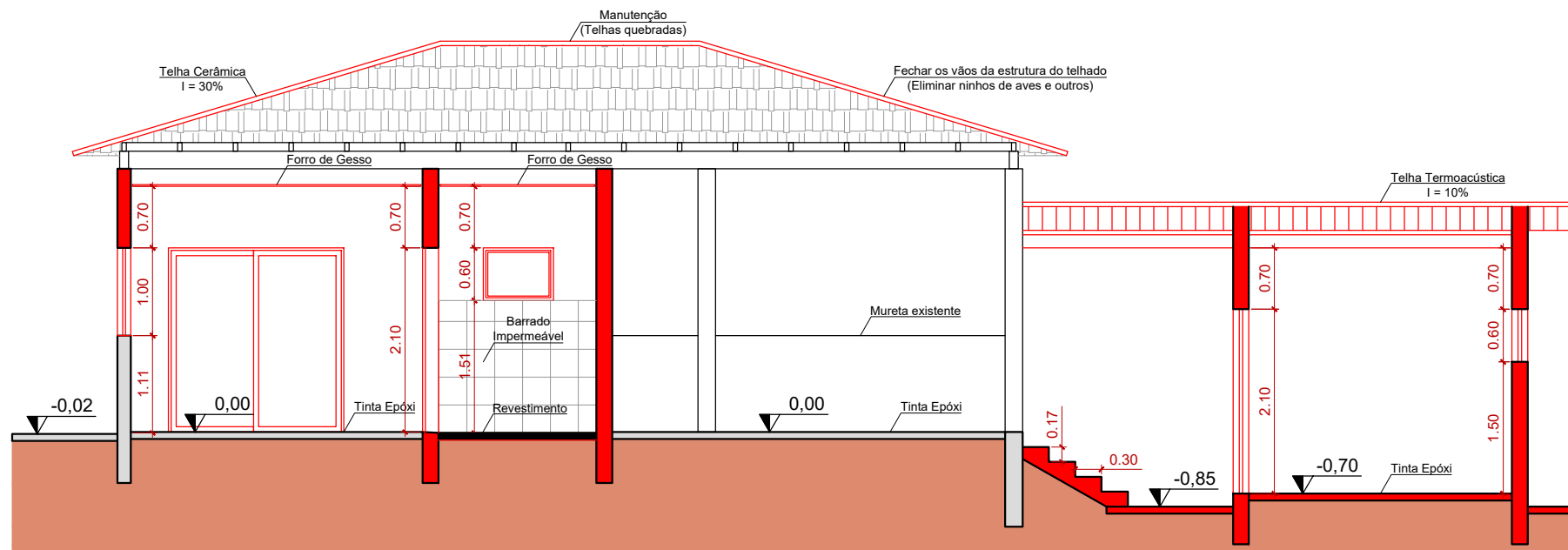
VISTA LATERAL

Escala 1:75



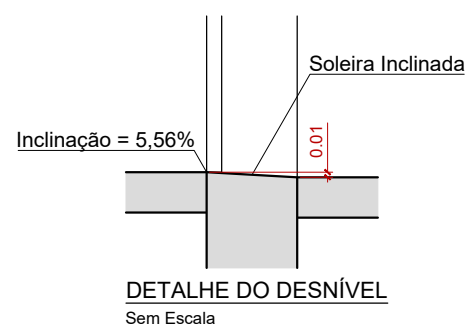
CORTE A - A

Escala 1:75

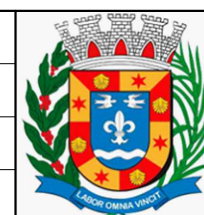


CORTE B - B

Escala 1:75



PROPRIETÁRIO:	PREFEITURA DA ESTÂNCIA TURÍSTICA DE SALTO		
LOCAL:	Canil Municipal de Salto (-23.203173252177262, -47.24822155585764)		
ASSUNTO:	PROJETO DE AMPLIAÇÃO DO CANIL MUNICIPAL		
ESCALA:	1:75	DATA:	Setembro / 2025
FOLHA:	04/12		



Prefeitura
da Estância Turística
de Salto